

**EXPANSION & REMODEL FOR...**  
**LITHIA HONDA OF BEND**  
**2225 NE HIGHWAY 20**  
**BEND, OREGON**

NEAL HUSTON & ASSOCIATES  
ARCHITECTS INC.



520 SW Powerhouse Dr.  
Suite 621  
Bend, Oregon 97702  
541.389.0991  
FAX 541.389.1344  
info@nealhuston.com  
www.nealhuston.com

Copyright © 2012 by  
Neal Huston & Associates Architects Inc.

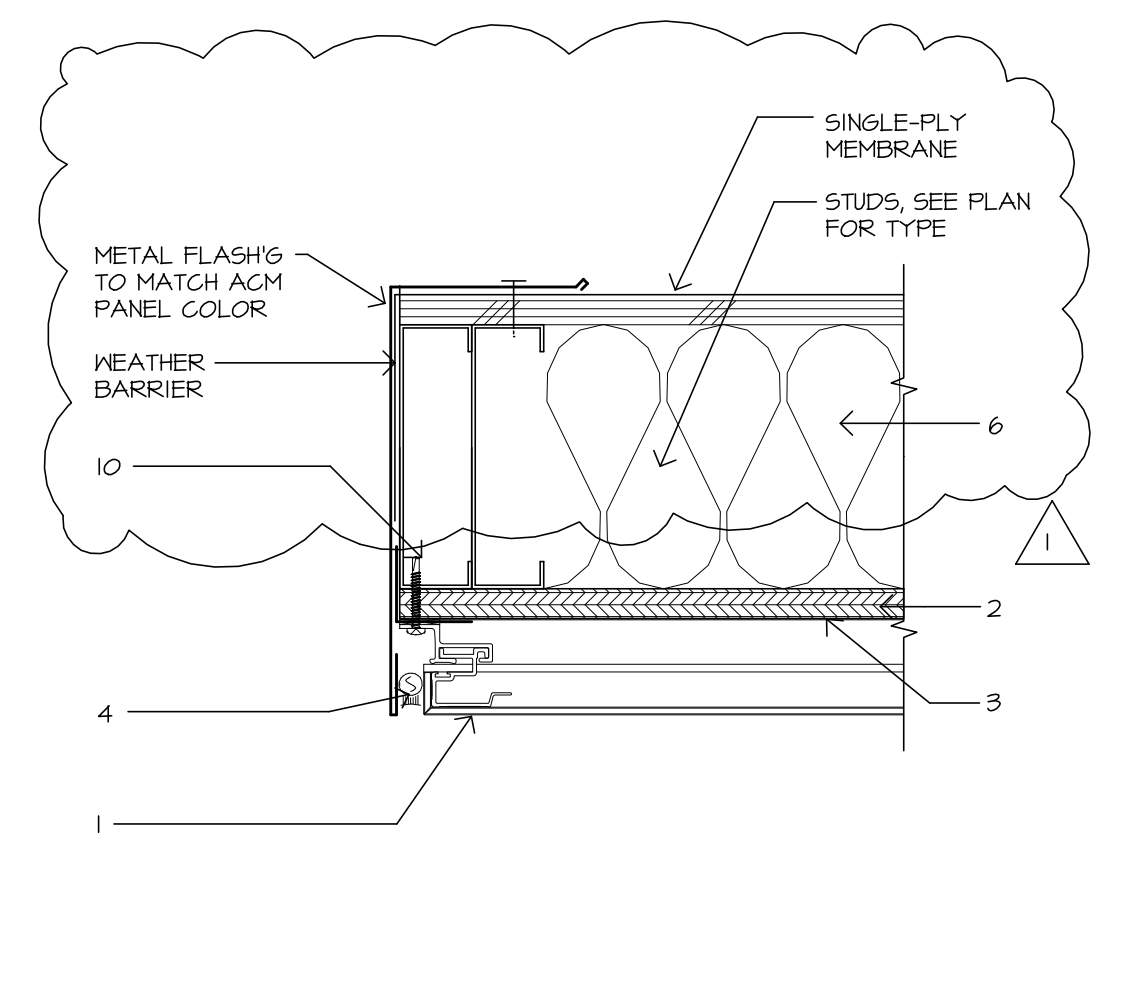
REVISIONS	
DATE	DESCRIPTION
1 4/26/13	CITY CORRECTIONS
2 6/11/13	CONSTRUCTION SET
3	
4	
5	
6	

DRAWINGS  
WALL SECTIONS & DETAILS

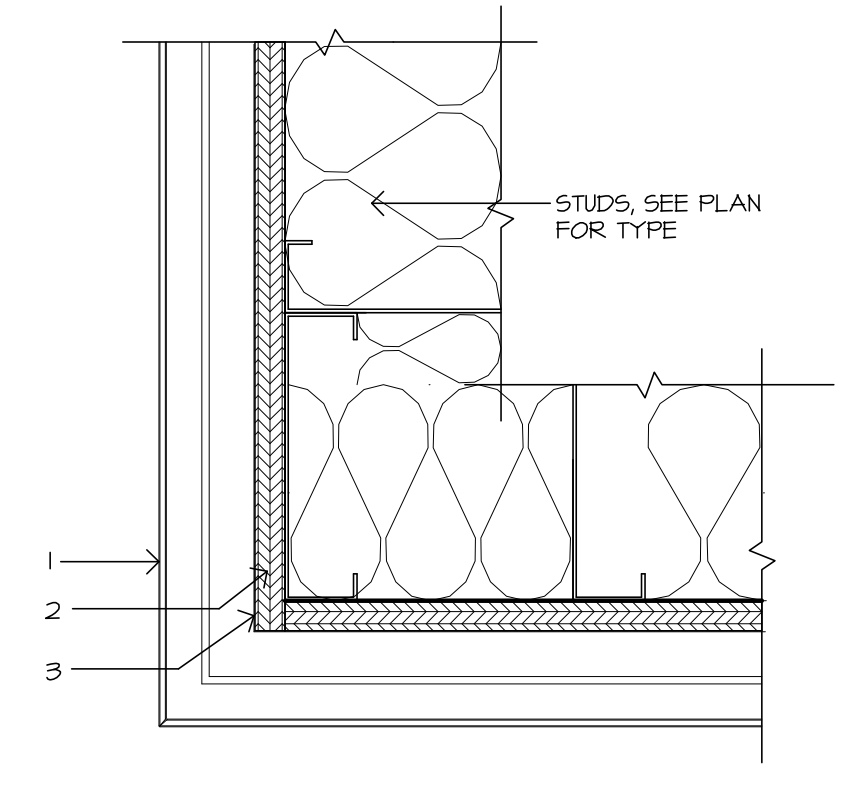
PROJECT #	1116
CAD FILE	1116sx33
SCALE	VARIABLES
DATE	11/16/2012
DRAWN BY	CK

**A4.4**

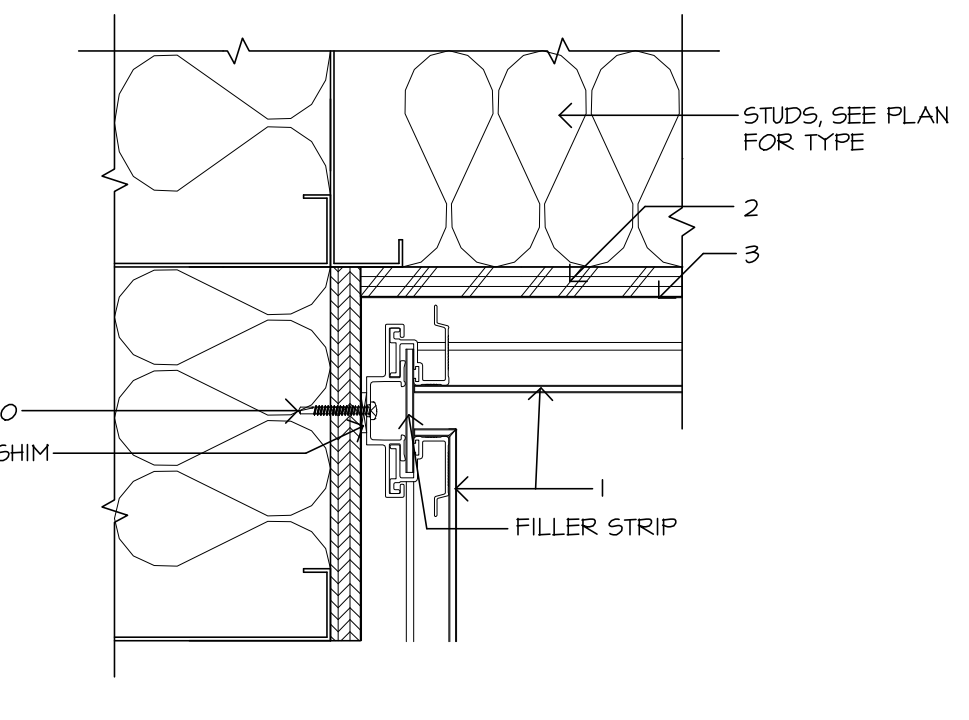
CONSTRUCTION SET:  
06/11/13



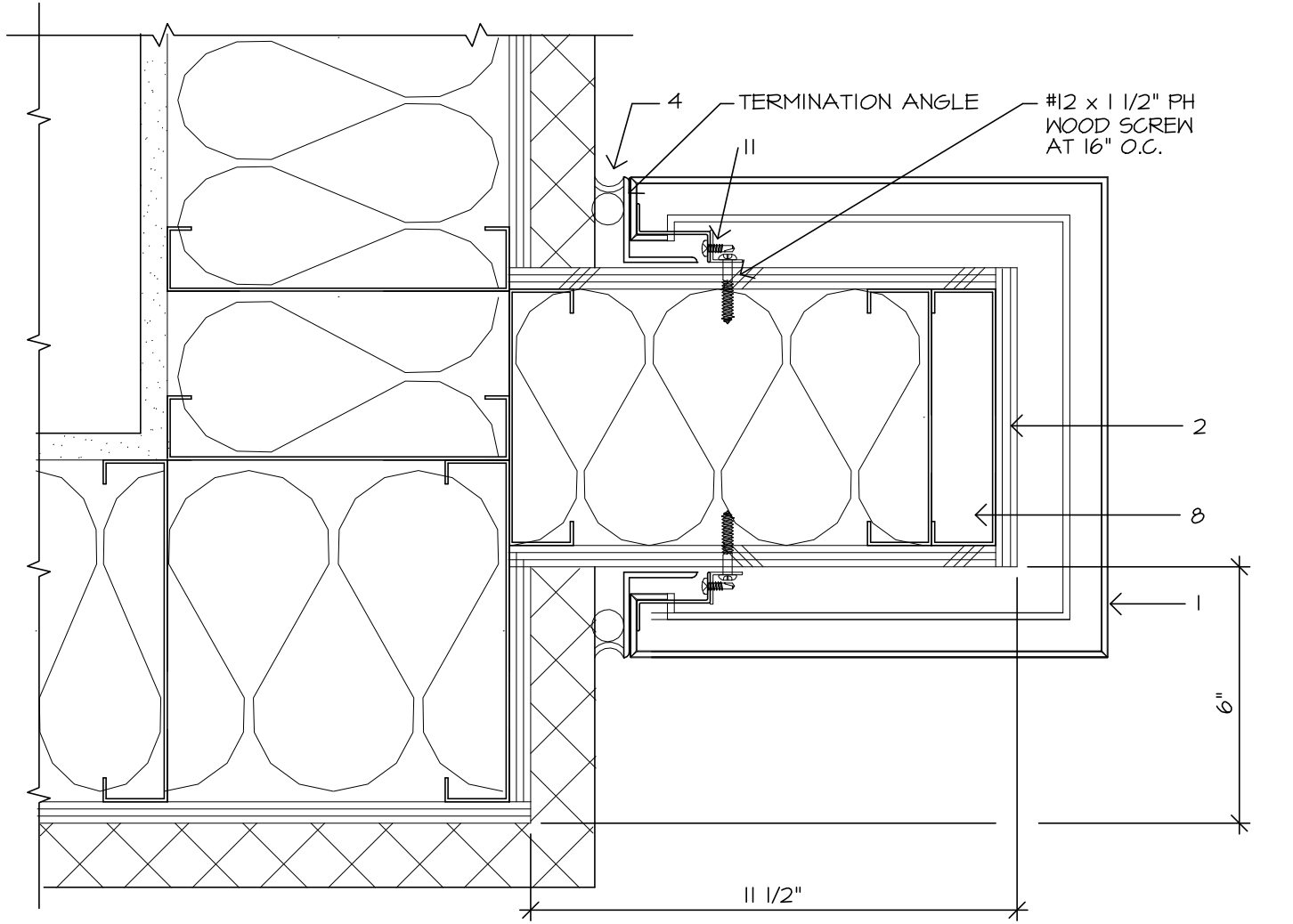
10 END WALL AT ROOF  
SCALE: 3/8"=1'-0"



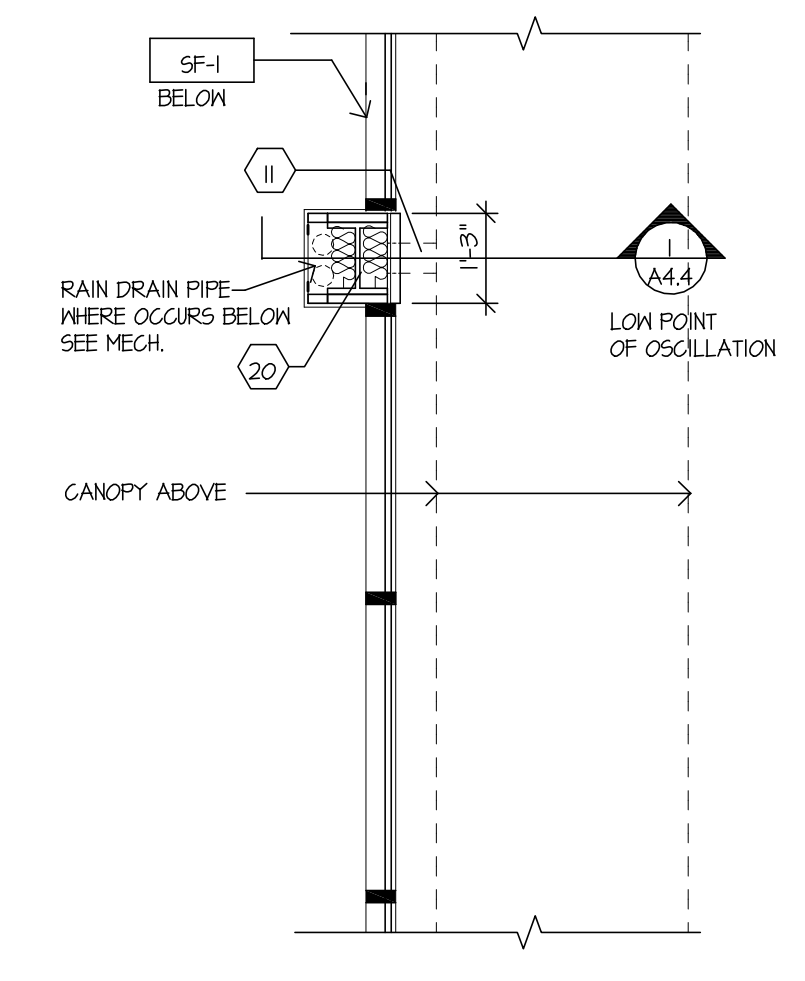
9 OUTSIDE CORNER AT ACM TYPICAL  
SCALE: 3/8"=1'-0"



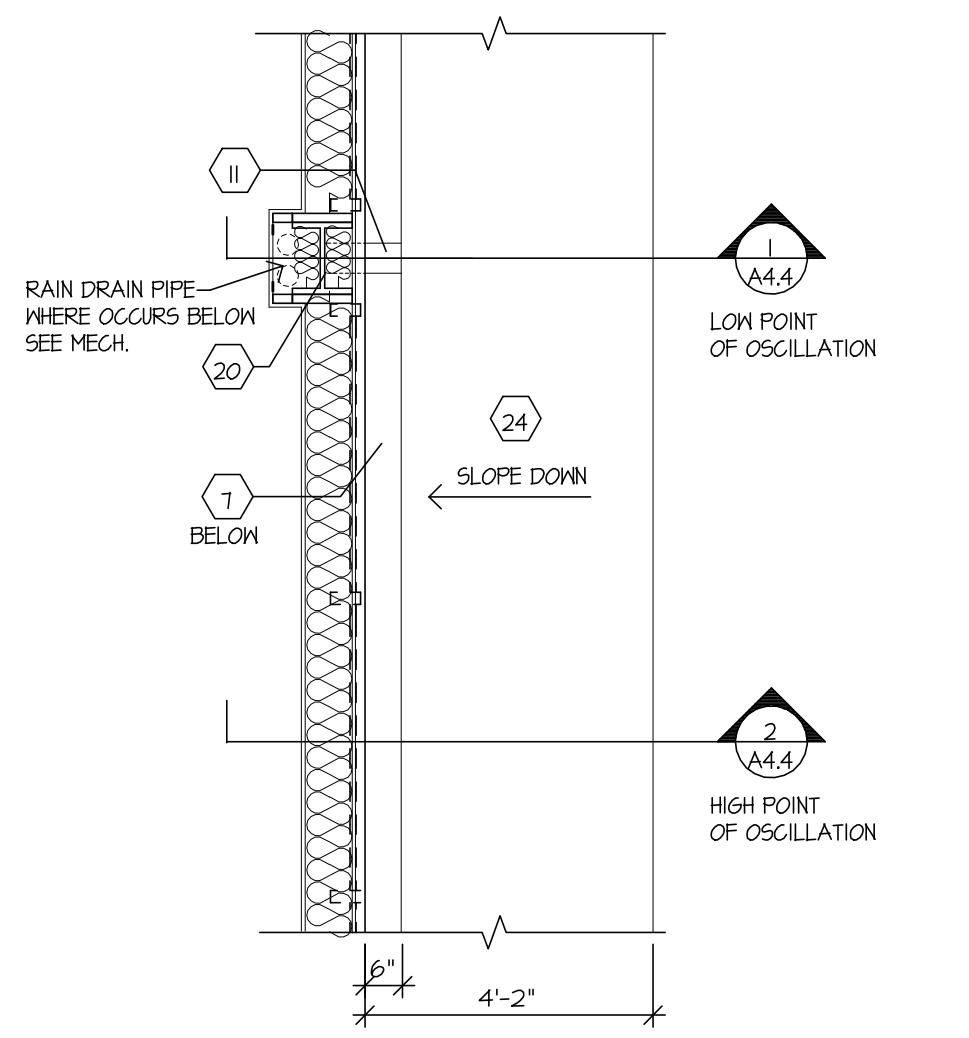
8 INSIDE CORNER AT ACM TYPICAL  
SCALE: 3/8"=1'-0"



7 ACM CLAD WING WALL (PLAN VIEW)  
SCALE: 3/8"=1'-0"

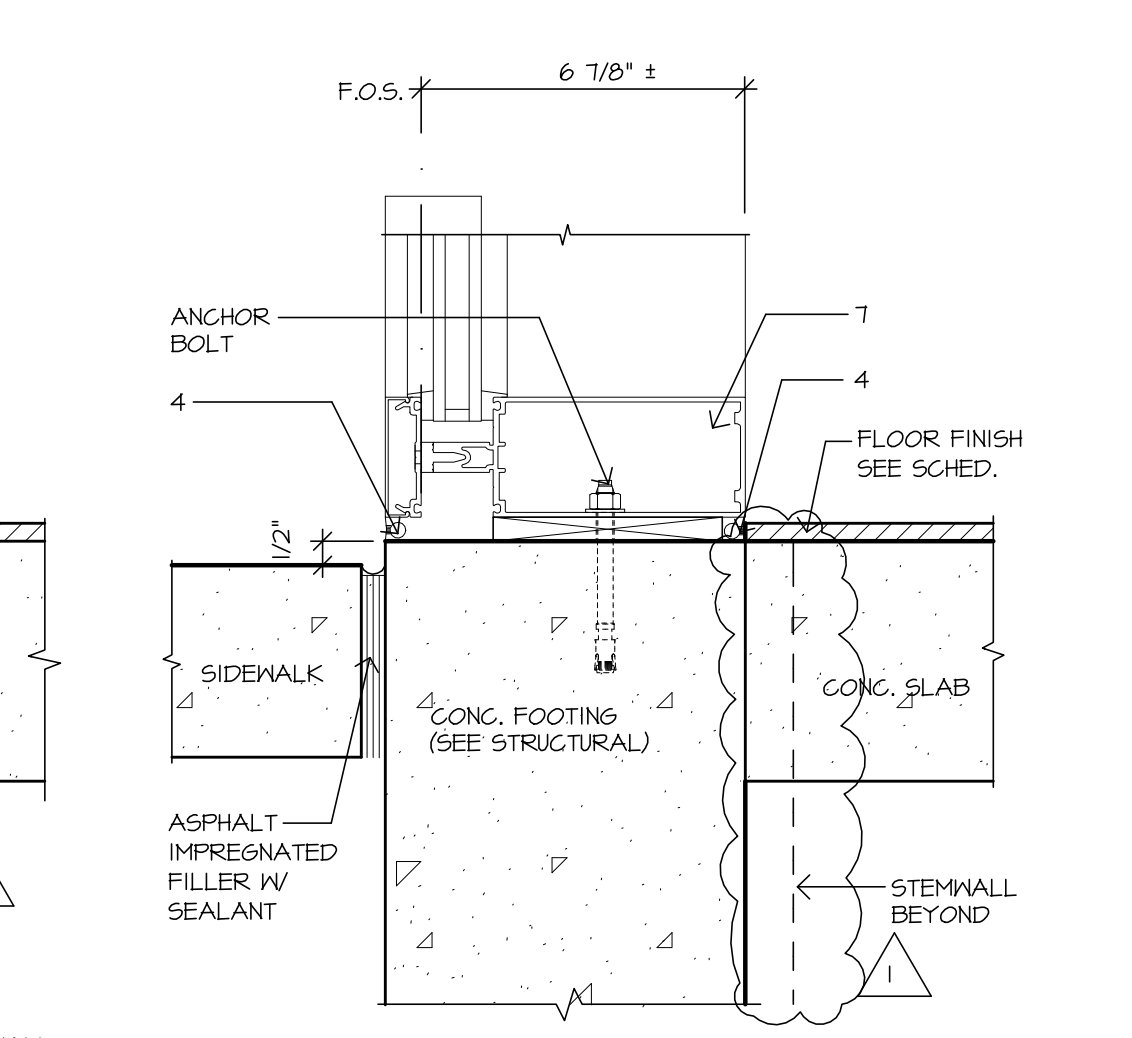


2 SHOWROOM CANOPY (BELOW)  
SCALE: 3/8"=1'-0"

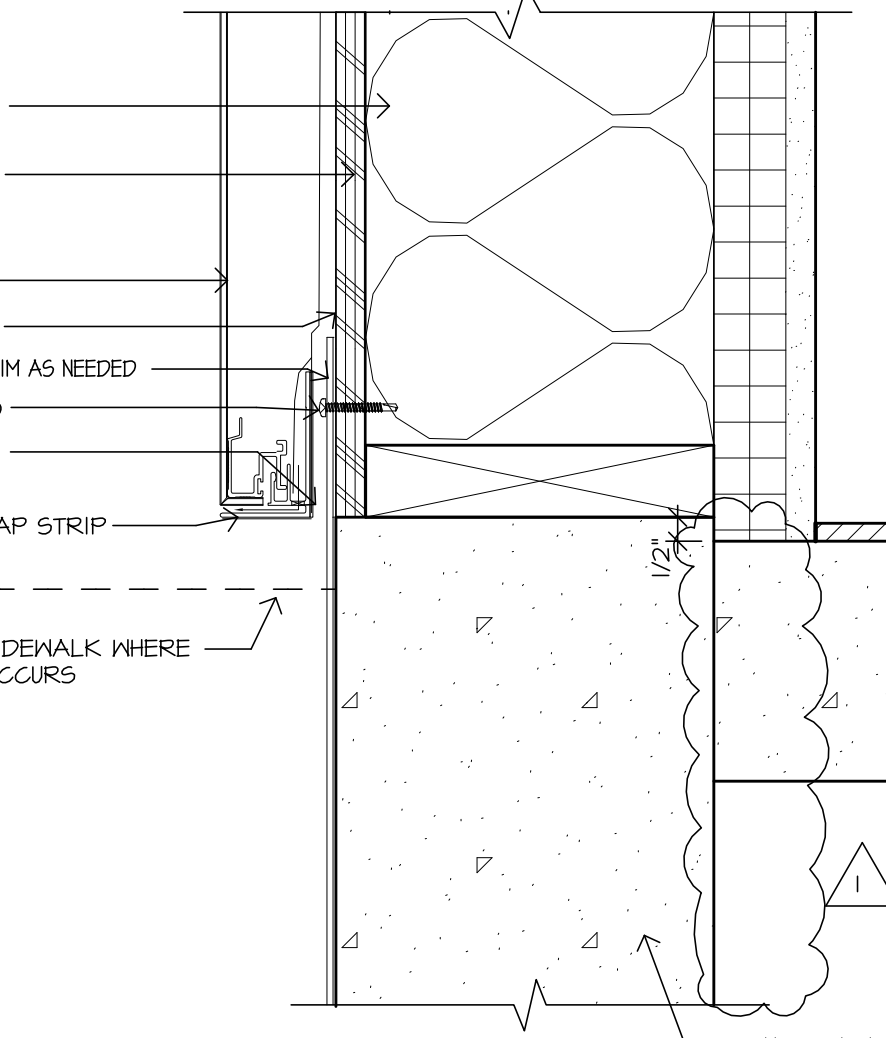


1 SHOWROOM CANOPY  
SCALE: 3/8"=1'-0"

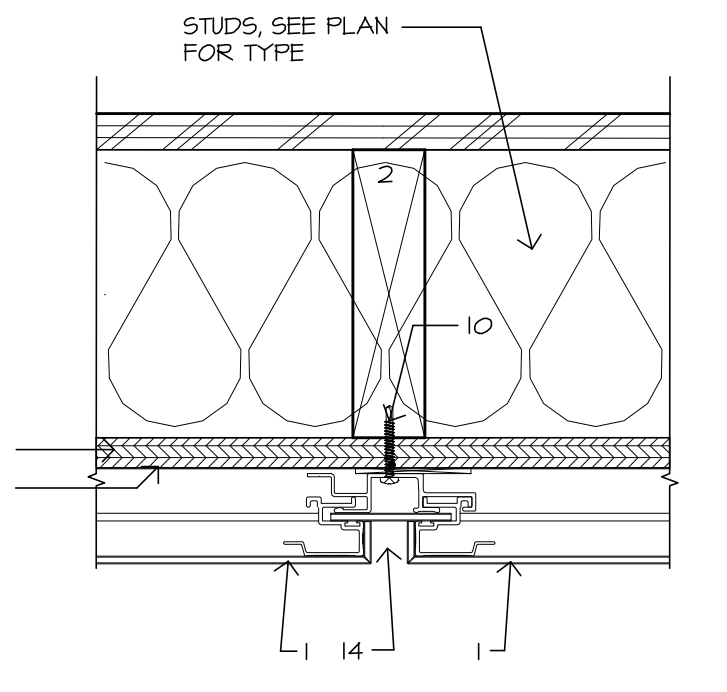
NOTE: EIFS SYSTEM SHALL BE DRYVIT, OUTSULATION PLUS MD WITH BACKSTOP NT AIR/WATER BARRIER RESISTIVE COATING OR APPROVED EQUAL. EIFS SYSTEM SHALL MEET ALL OF THE REQUIREMENTS OF 2010 OSBC, SEC. 1403.2 AND 1408.4.2 FOR WEATHER PROTECTION.



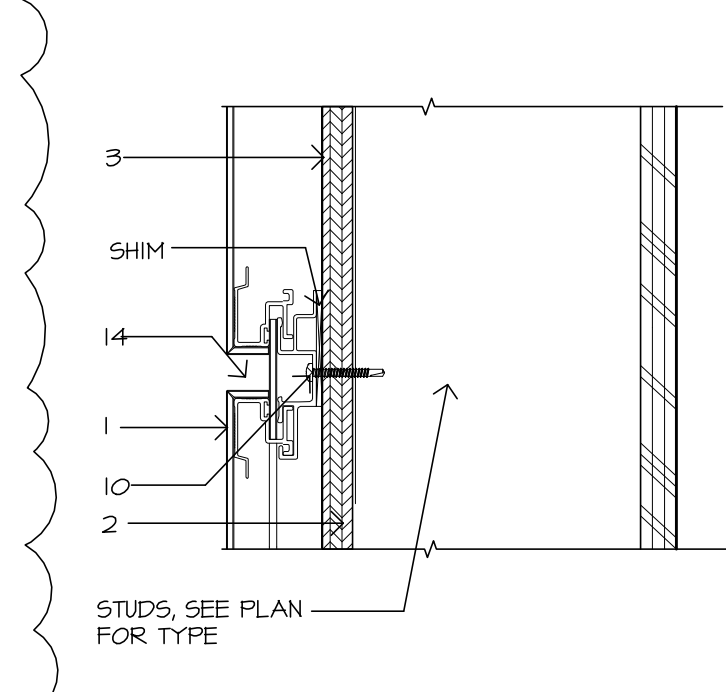
14 7 1/2" WINDOW SILL AT SLAB TYPICAL  
SCALE: 3/8"=1'-0"



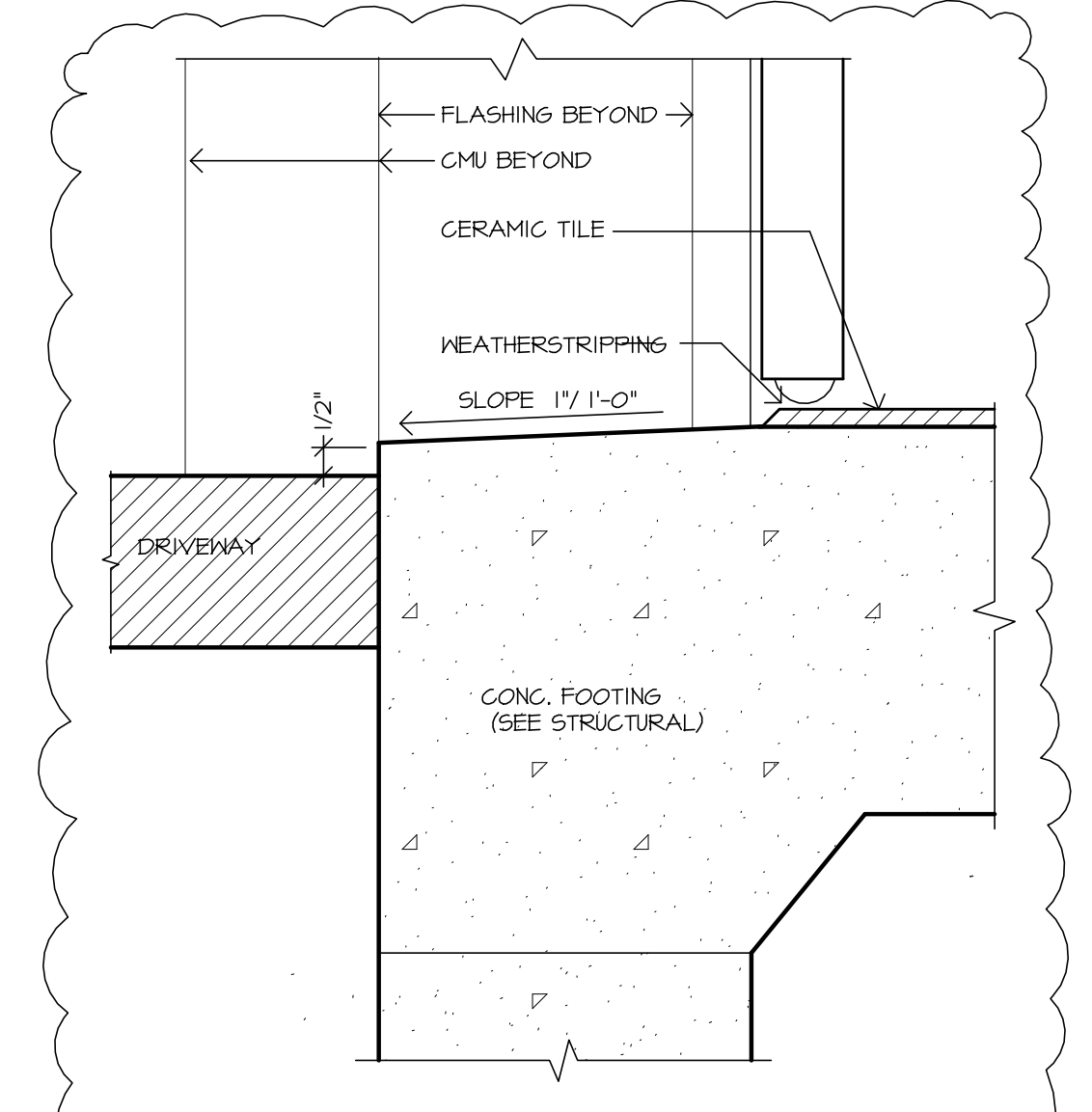
13 BASE DETAIL  
SCALE: 3/8"=1'-0"



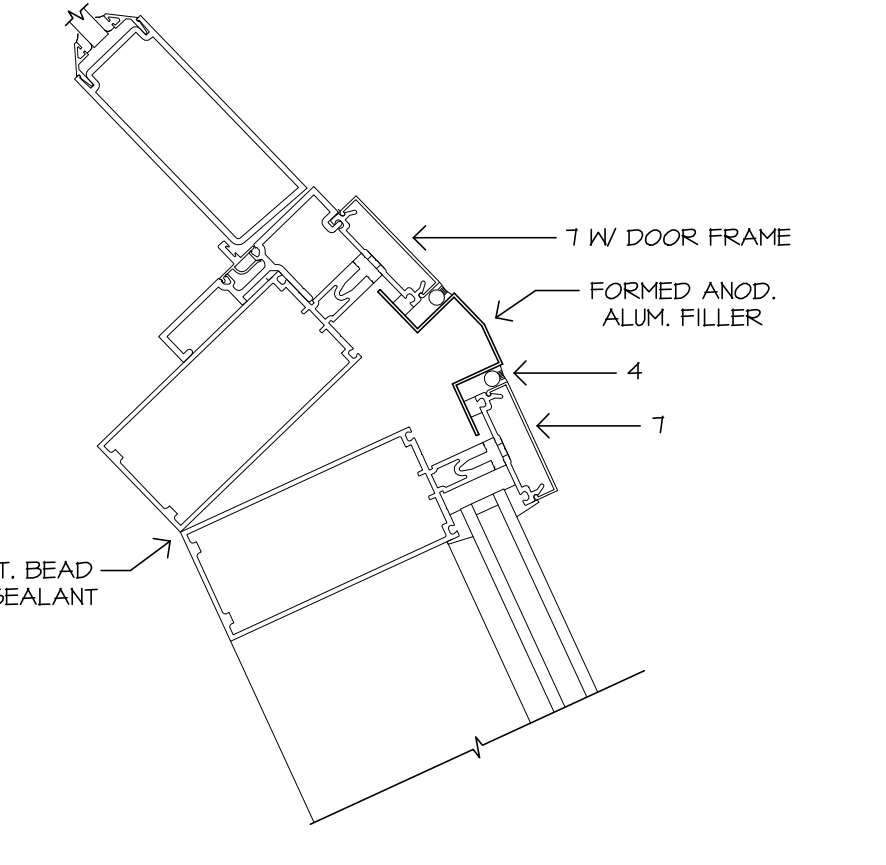
12 VERT. JOINT DETAIL TYPICAL  
SCALE: 3/8"=1'-0"



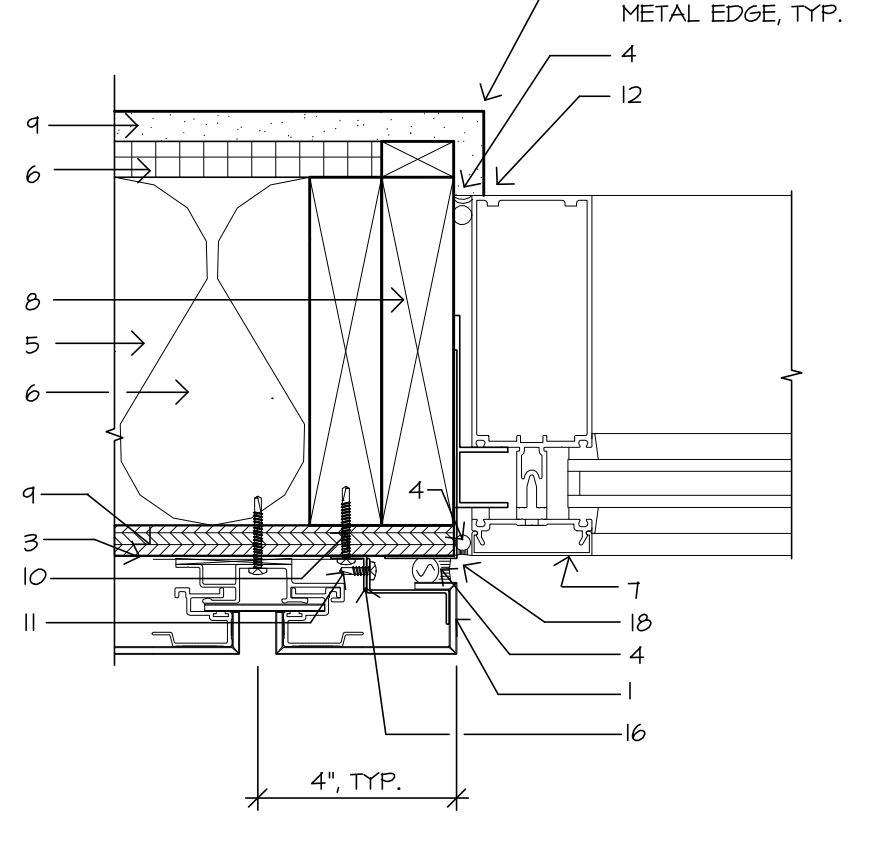
11 HORIZ. JOINT DETAIL TYPICAL  
SCALE: 3/8"=1'-0"



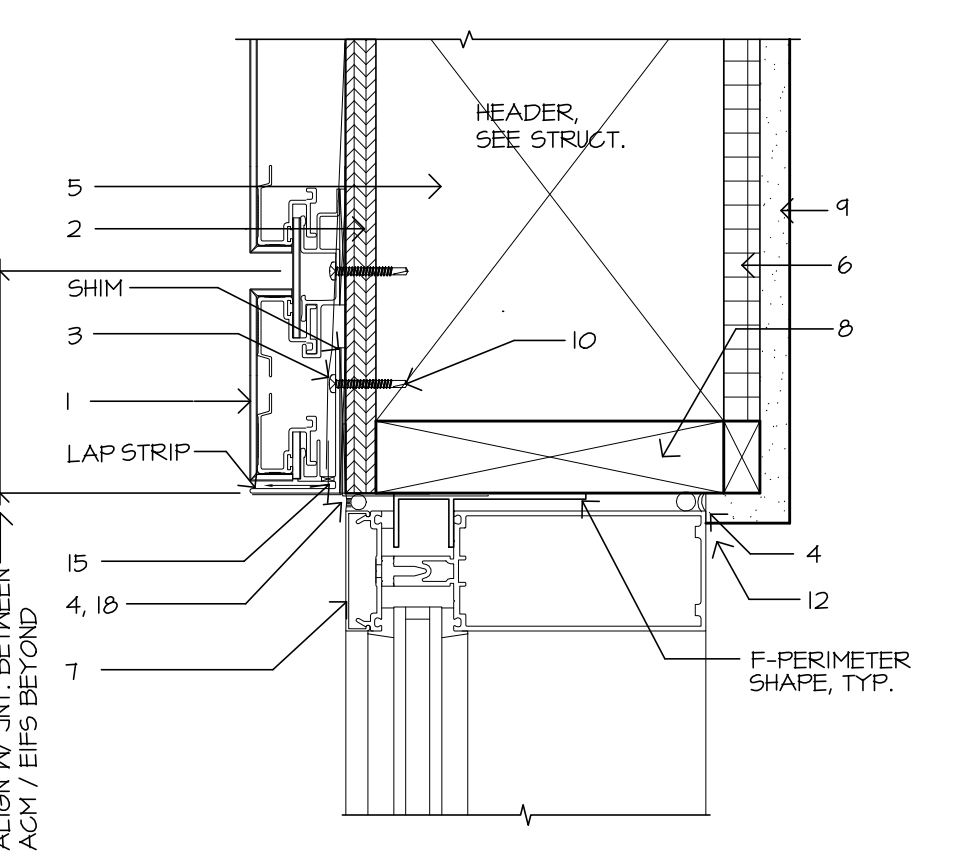
18 ALUM. SECTIONAL DOOR SILL AT ACM WALL  
SCALE: 3/8"=1'-0"



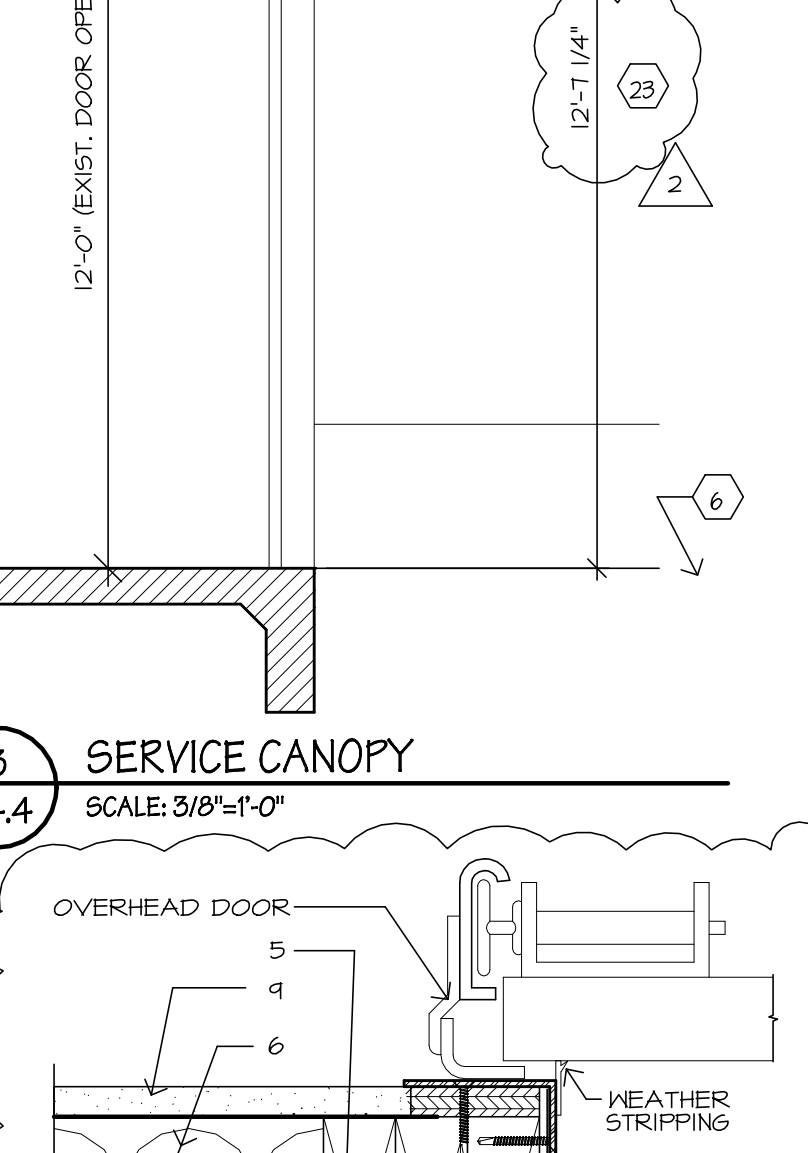
17 7 1/2" WINDOW/DOOR JAMB  
SCALE: 3/8"=1'-0"



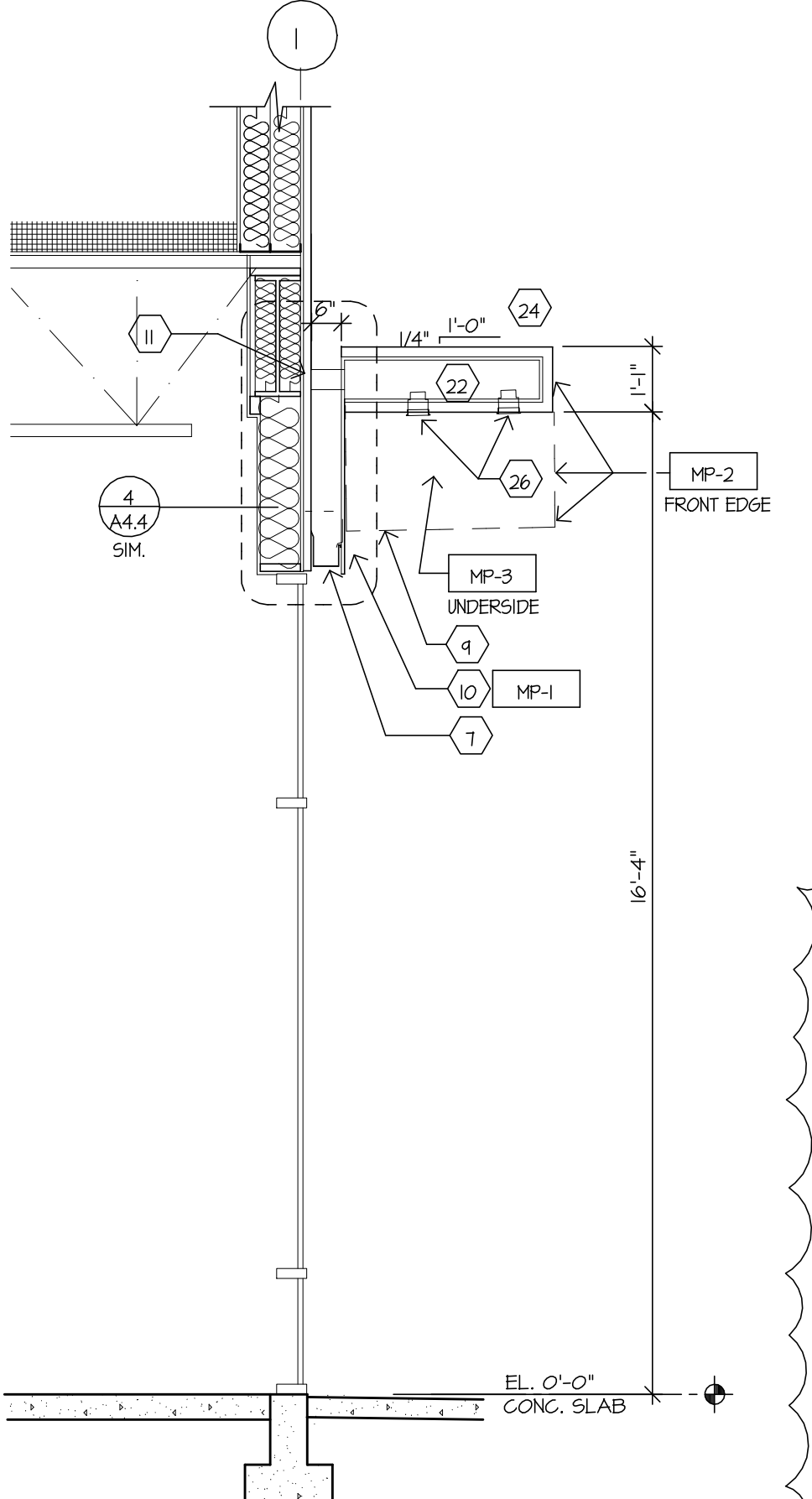
16 7 1/2" WINDOW JAMB TYPICAL  
SCALE: 3/8"=1'-0"



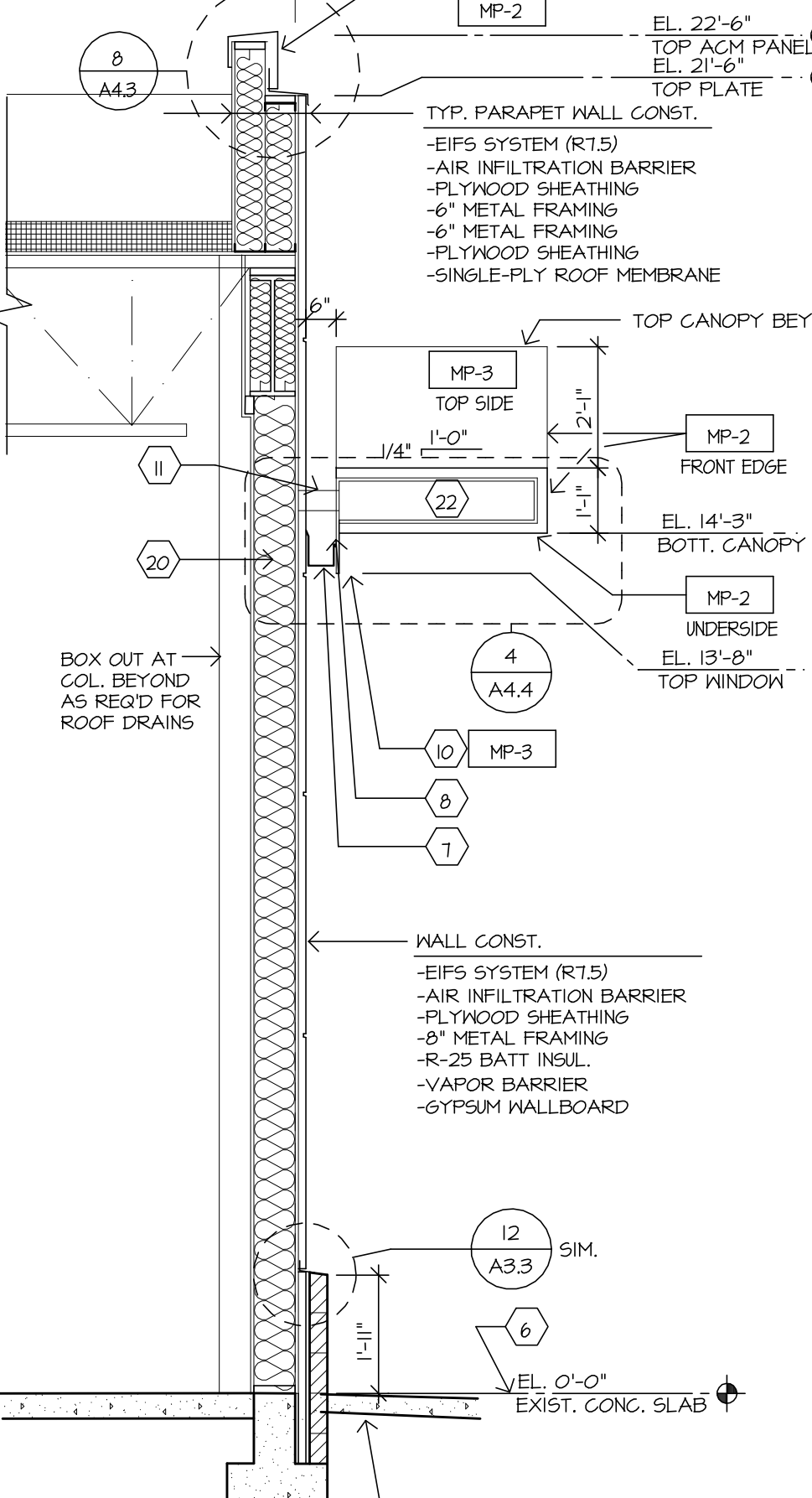
15 7 1/2" WINDOW HEAD TYPICAL  
SCALE: 3/8"=1'-0"



6 ALUM. SECTIONAL DOOR JAMB (HEAD SIM.)  
SCALE: 3/8"=1'-0"



2 SHOWROOM CANOPY (BELOW)  
SCALE: 3/8"=1'-0"



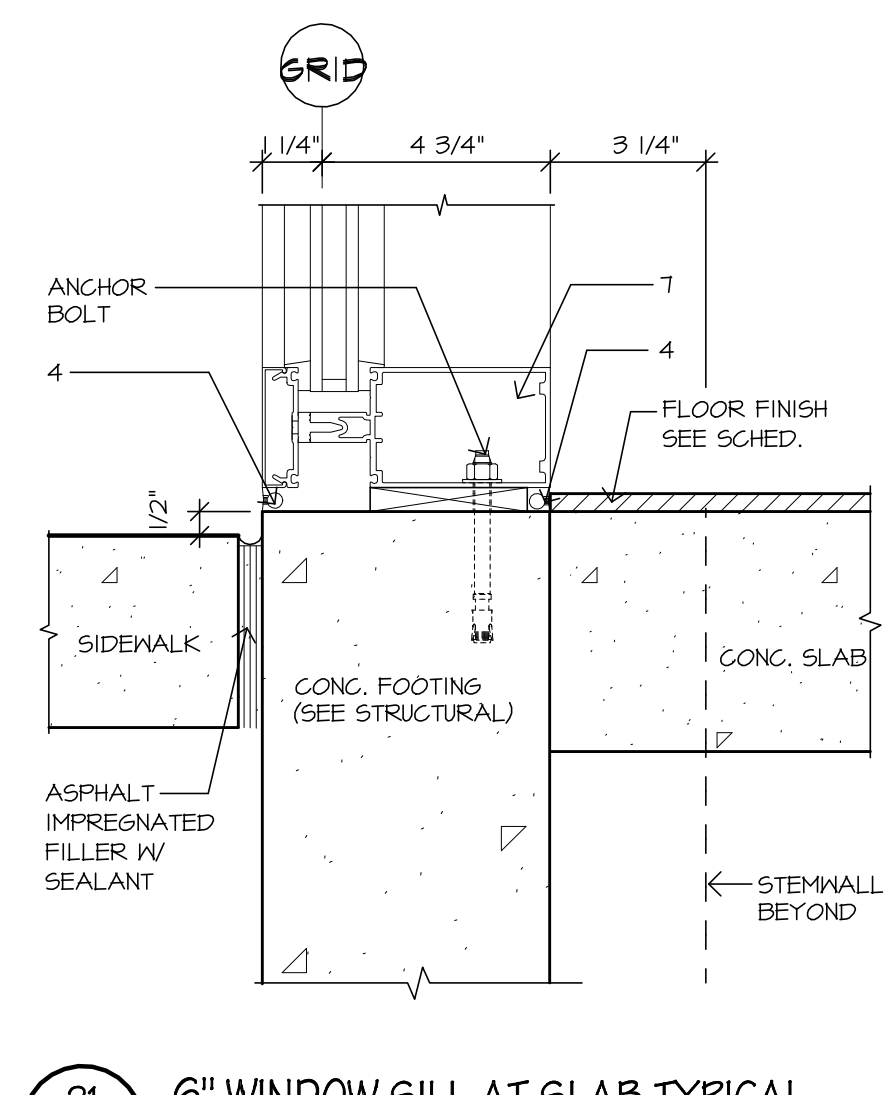
1 SHOWROOM CANOPY  
SCALE: 3/8"=1'-0"

GENERAL NOTES

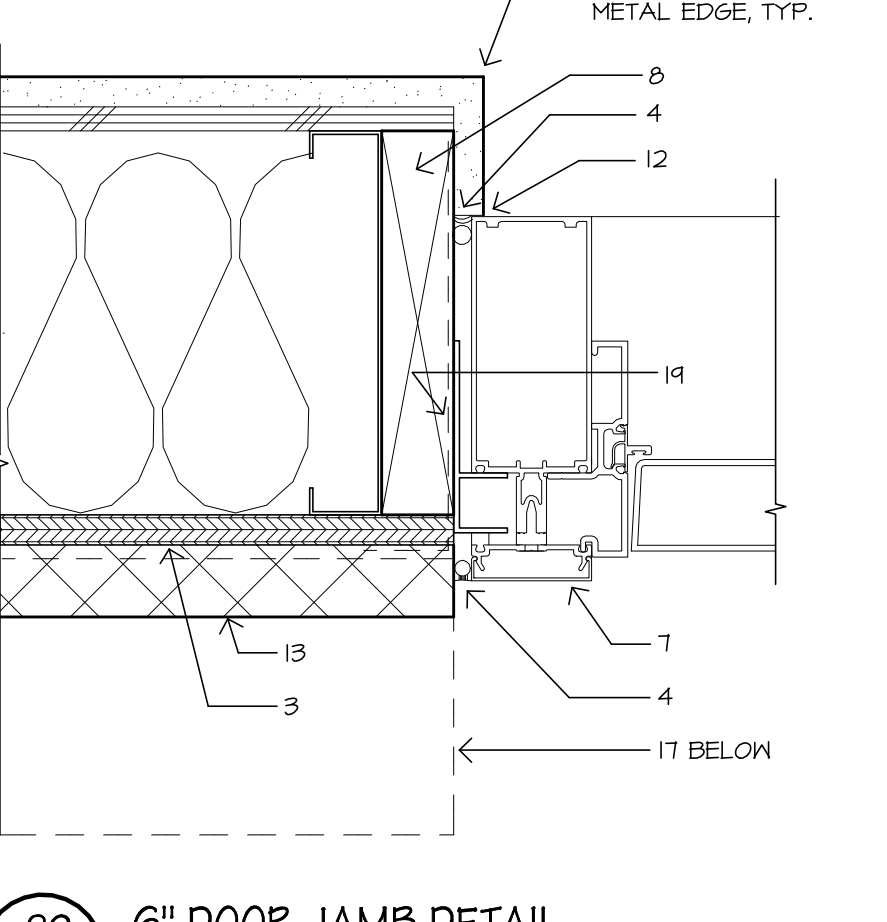
1. 'TYVEK' STRAIGHT FLASHING BEHIND EVERY SCREW PENETRATION
2. PROVIDE LOOSE FIT FASTENER TO ALLOW CONNECTION PANEL MOVEMENT
3. KEEP TOP 4 BOTTOM PANEL CLIPS AT OR GREATER THAN SPECIFIED MINIMUM DISTANCES FROM CONNECTION PANEL

LEGEND

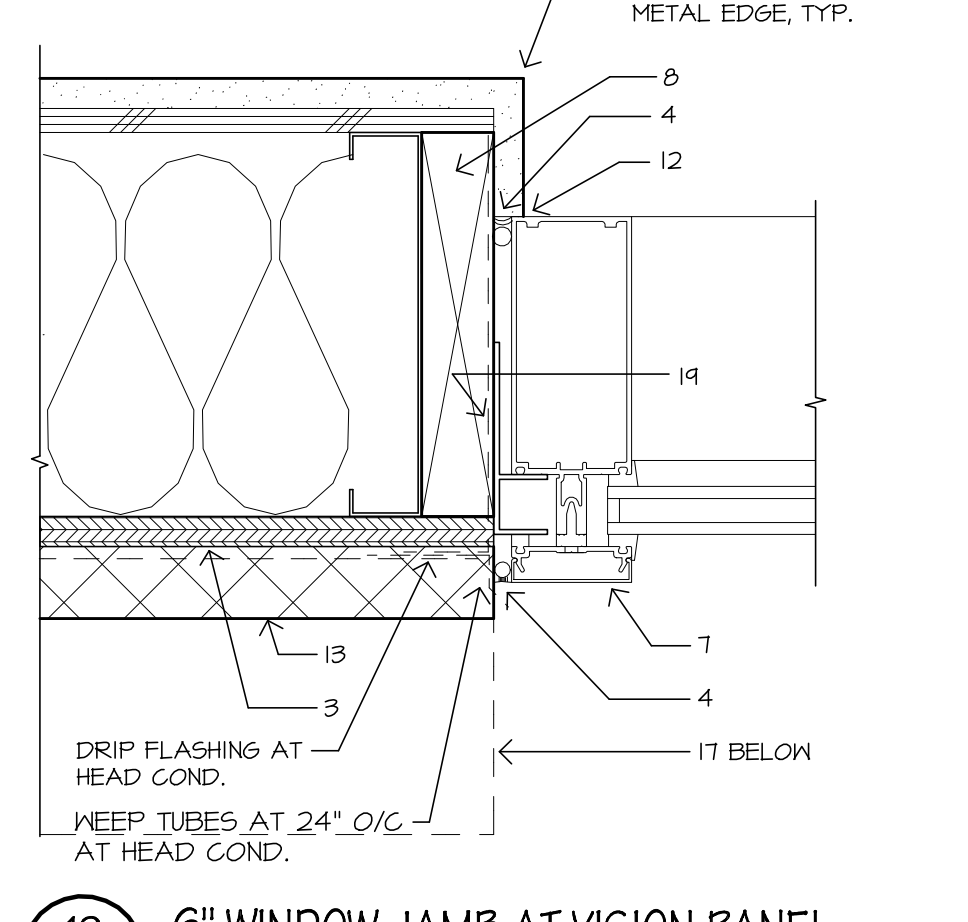
1. ALUMINUM COMPOSITE PANEL
2. PLYWOOD SHEATHING
3. COMMERCIAL AIR & WATER BARRIER
4. SEALANT & BACKER ROD, 1/2" WIDE TYP.
5. WOOD STUDS
6. INSULATION / SEE SPECS.
7. CURTAINHALL
8. WOOD BLOCKING
9. 5/8" GYPSUM BOARD
10. #12-16 x 1 1/2" PH TKS/BS AT 16" O.C.
11. #10-16 x 5/8" PH TKS/BS AT 16" O.C.
12. CONT. BEAD SEALANT AT GYP. BD. MTL. EDGE
13. EIFS
14. 3/4" x 3/4" REVEAL (TYPICAL)
15. KEEP HOLE/ FIELD DRILL (2) PER PANEL
16. 3/4" x 3/4" 063 ANGLE
17. CMU VENEER
18. 2" x 3" x 0.040" ALUM. ANGLE BY WINDOW INSTALLER, FINISH TO MATCH WINDOWS
19. EIFS MANUF. REQ'D WATERPROOF WRAP AROUND ALL FOUR SIDES OF WINDOW/ DOOR ROUGH OPENING TYP.



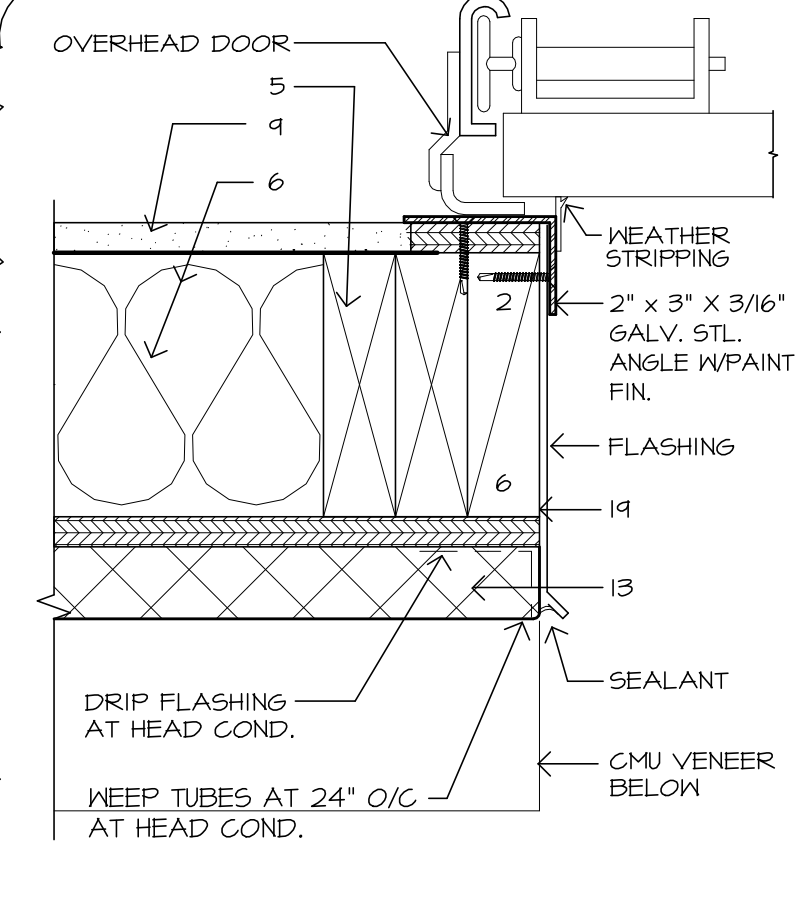
21 6" WINDOW SILL AT SLAB TYPICAL  
SCALE: 3/8"=1'-0"



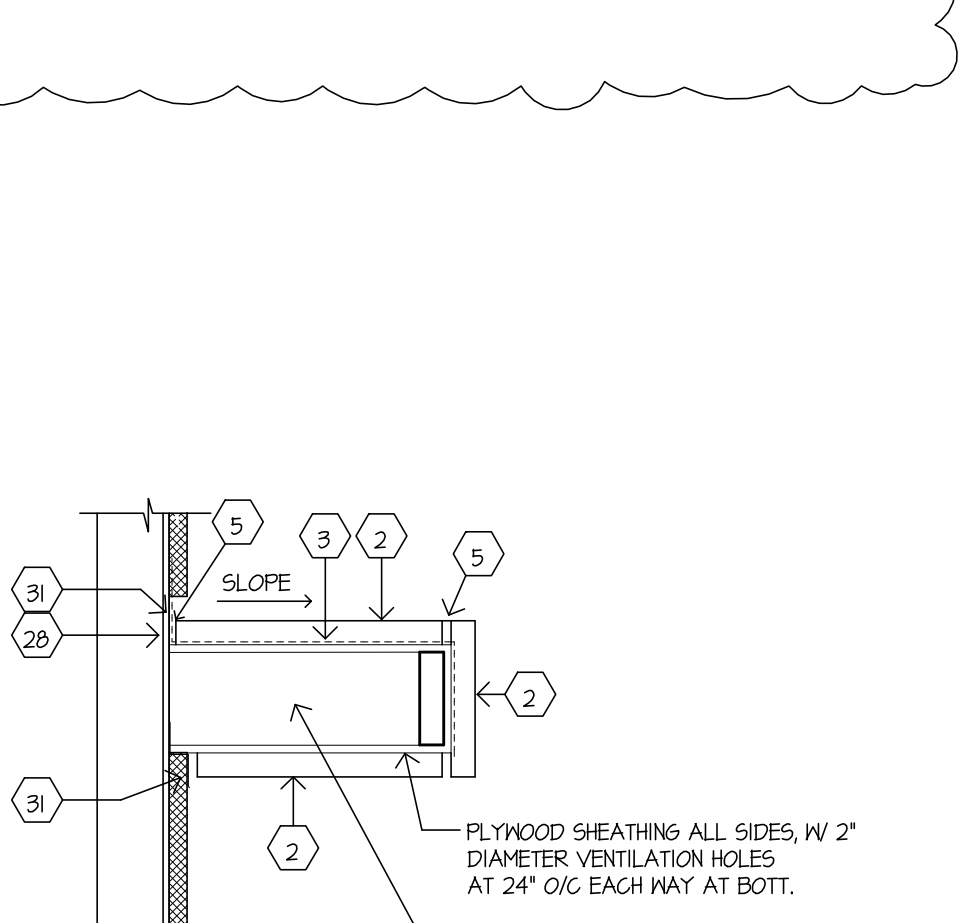
20 6" DOOR JAMB DETAIL  
SCALE: 3/8"=1'-0"



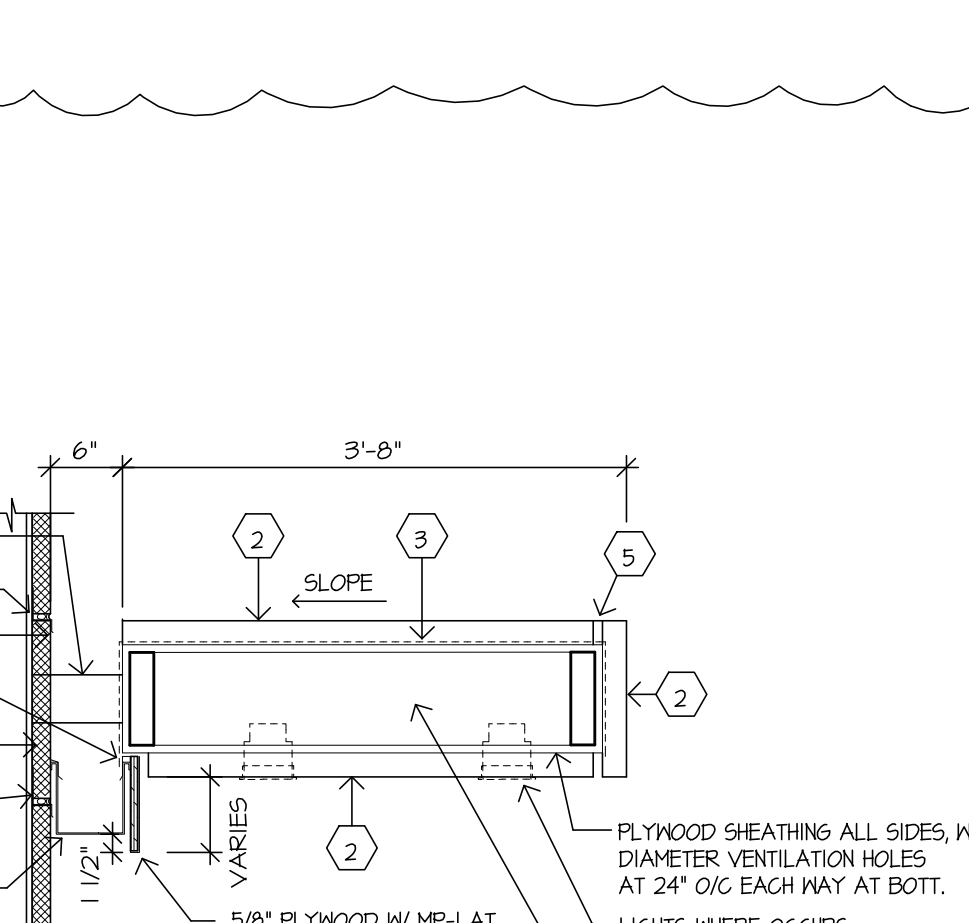
19 6" WINDOW JAMB AT VISION PANEL  
SCALE: 3/8"=1'-0"



3 SERVICE CANOPY  
SCALE: 3/8"=1'-0"



2 SHOWROOM CANOPY (BELOW)  
SCALE: 3/8"=1'-0"



1 SHOWROOM CANOPY  
SCALE: 3/8"=1'-0"

LEGEND	
#	NOTE DESIGNATOR - REFER TO DRAWING NOTES ON THIS SHEET
?-#	FINISH DESIGNATOR - REFER TO EXTERIOR FINISH SCHEDULE ON SHEET A4J

DRAWING NOTES

1. ROOF STRUCTURE
2. ACM PANEL OVER WEATHER BARRIER
3. SINGLE-PLY ROOFING OVER HORIZ. & VERT. SURFACES, TYP.
4. 1/2" DEEP x 3/4" WIDE REVEAL
5. SEALANT & BACKER ROD
6. SLOPE SIDEWALK AWAY FROM BUILDING FOR POSITIVE DRAINAGE
7. ALUMINUM GUTTER SLOPED TO DOWNSPOUTS
8. LIP ON BACK EDGE OF CANOPY TO CHANNEL WATER INTO GUTTER
9. BOTTOM OSCILLATION OF CANOPY
10. GUTTER SHROUD
11. POST-MOUNT CANOPY TO WALL, OFFSET 6" FOR DRAINAGE
12. BACK SIDE OF ENTRY CYLINDER
13. LIGHT FIXTURE
14. BLOCKING AS REQUIRED
15. GYPSUM BOARD
16. GRAPHIC ANGLE
17. ANGLE
18. PLYWOOD

19. INTERLAM PANEL OPTION WHEN FULL-SIZED GRAPHIC IS NOT USED.
20. COLUMN AND COLUMN COVER FOR HANG CANOPY SUPPORT.
21. POSITIVE ANCHORAGE/BLOCKING THE FULL LENGTH OF CANOPY FASCIA
22. FRAMING/DETAILING FOR HANG CANOPY BY ARCHITECT OF RECORD/STRUCTURAL ENGINEER.
23. DIMENSION TAKEN AT PROJECTED FACE OF BUILDING.
24. THE DESIGN INTENT IS FOR RAINWATER TO RUN BACK TOWARDS THE GUTTER LOCATED AT THE FACE OF THE BUILDING
25. CENTERLINE OF MULLION AND METAL PANEL REVEAL
26. IN-SOFT LIGHTING OCCURS ONLY AT HIGH POINT OF OSCILLATION AND FLAT PORTION OF SOFFIT.
27. EXTEND FLASHING FROM TOP OF GUTTER UP UNDER ROOF MEMBRANE
28. EXTEND FLASHING FROM TOP OF GUTTER TO TOP LEVEL OF SOFFIT.
29. BLOCKING & FLASHING AS REQ'D FOR GUTTER
30. METAL GUTTER, MATCH MP-1
31. FLASHING AS REQ'D FOR EIFS
32. ROUND STEEL TUBE COLUMN
33. SEALANT